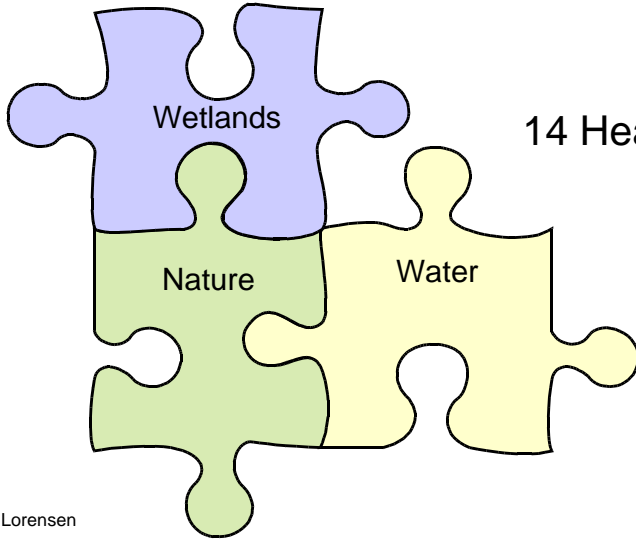


Kain Development Proposed 18 Lot Subdivision



Bill Lorensen
14 Hearthside Drive

Lorensen

1

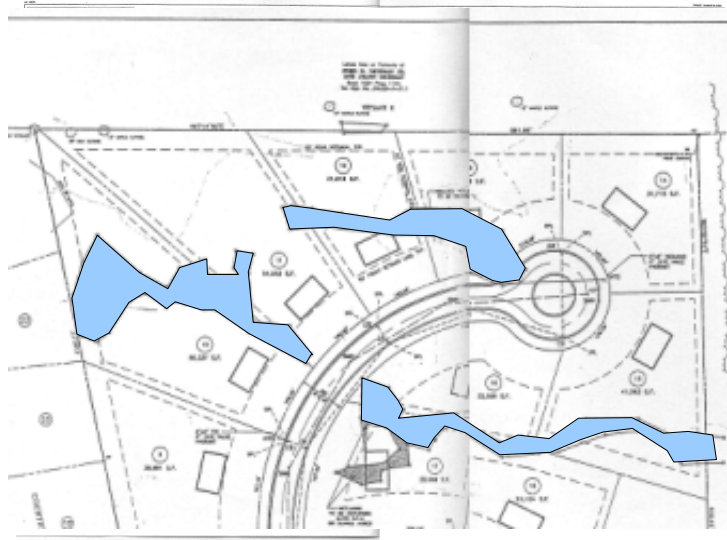
The Wetlands Paradox

Theory versus Reality

Lorensen

2

Corps of Engineers Wetlands



Lorensen

3

USGS Wetlands



Lorensen

4

USGS Wetlands



Lorensen

5

USGS Wetlands



Lorensen

6

Longkill Wetlands Reality



Lorensen

7

Longkill Wetlands Reality



Lorensen

8

Longkill Wetlands Reality



Lorensen

9

Longkill Wetlands Reality



Lorensen

10

Longkill Wetlands Reality



Lorensen

11

Longkill Wetlands Reality



Lorensen

12

Longkill Wetlands Reality



Lorensen

13

Longkill Wetlands Reality



Lorensen

14

Longkill Wetlands Reality



Lorensen

15

Longkill Wetlands Reality



Lorensen

16

Longkill Wetlands Reality



Lorensen

17

Longkill Wetlands Reality



Lorensen

18

Longkill Wetlands Reality



Lorensen

19

Longkill Wetlands Reality



Lorensen

20

Longkill Wetlands Reality



Lorensen

21

High Water Table



Lorensen

22

Hearthside Houses



Lorensen

23

Hearthside Houses



Lorensen

24

Hearthside Houses



Lorensen

25

Nature



Lorensen

26

Hearthside Wildlife



Lorensen

27

Hearthside Wildlife



Lorensen

28

Hearthside Wildlife



Lorensen

29

Hearthside Wildlife



Lorensen

30

Hearthside Wildlife



Lorensen

31

Longkill Forest



Lorensen

32

Longkill Forest



Lorensen

33

Eastline Development



Lorensen

34

Eastline Development



Lorensen

35

Eastline Development



Lorensen

36



Requests to the Board

Before Approval



Require the builder to

- Provide a Draft Environment Impact Statement
- Reduce the number and layout of the homes

If Approved



Require the builder to

- Convert the 50 foot no-cut buffer into a conservation easement
- Create a 3-4 foot berm on the easement
- Protect existing wetlands from pollution
- Save all mature trees in the development
- Post a long term bond to cover future water damage

